

Bromsgrove District Council Watercourse Maintenance Schedule



Contents

Abbreviations	ii
1.0 Introduction	1
2.0 Watercourses Managed by Bromsgrove District Council	2
3.0 Typical Maintenance Requirements	3
4.0 Watercourse Profiles:	4
4.1 Watercourses Managed by Bromsgrove District Council	4
4.1.1 Barley Brook; Shelley Close to Stourbridge Road, Catshill	4
4.1.2 Battlefield Brook; Sanders Park, Bromsgrove	5
4.1.4 Callow Brook; St Chadds Park, Rubery	7
4.1.5 Gallows Brook, Sweetpool Nature Reserve, Hagley	8
4.1.6 Hollywood Brook; Beaudesert Nature Park, Wythall	9
4.1.7 Marl Brook; Braces Lane Recreation Ground, Catshill	10
4.1.8 Marl Brook; Golden Cross Lane Car Park, Catshill	11
4.1.9 Marl Brook; Lingfield Walk Recreation Ground, Catshill	12
4.1.10 River Rea Tributary; Boleyn Road, Rednal	13
4.1.11 Spadesbourne Brook; Brookvale Close, Bromsgrove	14
4.1.12 Spadesbourne Brook; Charford Road Recreation Ground, Bromsgrove	15
4.1.13 Spadesbourne Brook; Crown Close, Bromsgrove	16
4.1.14 Spadesbourne Brook; Lickey End Recreation Ground, Lickey End	17
4.1.15 Spadesbourne Brook; Little Heath Lane, Lickey End	18
4.1.16 Spadesbourne Brook; Meadowvale Road, Lickey End	19
4.1.17 Spadesbourne Brook; Roman Way, Bromsgrove	20
4.1.18 Spadesbourne Brook; Spadesbourne Walk, Bromsgrove	21
4.1.19 Spadesbourne Brook; St John Street (Waitrose), Bromsgrove	22
4.1.20 Spadesbourne Brook; Watt Close, Bromsgrove	23
4.1.21 Spadesbourne Brook; Yeomans, Bromsgrove	24
4.1.22 Sugar Brook; Buntsford Road, Bromsgrove	25
4.1.23 Sugar Brook; Stoke Road, Bromsgrove	26
4.1.24 Warwick Brook; The Oakhalls Estate, Bromsgrove	27
4.1.25 Willow Brook; Grayshott Close, Bromsgrove	28
4.2 Watercourses on Unregistered Land	29
4.2.1 Callow Brook; Land at New Road, Rubery	29
4.2.2 Churchill Brook; Beoley Lane, Beoley	30
4.2.3 Gallows Brook; Markey Way, Hagley	31
4.2.4 Hollywood Brook; Various Parcels of Land, Wythall	32
4.2.5 Marl Brook; Footpath behind Marlbrook Gardens, Catshill	33
4.2.6 Spadesbourne Brook; Burcot Avenue, Bromsgrove	34
4.2.7 Upper Arrow Tributary; Blackwell Lane, Barnt Green	35
5.0 Maintenance Responsibilities	36
6.0 Maintenance Timings	37
6.0 Maintenance Frequency At A Glance	38
7.0 Programme of Major Maintenance Activities For Next 10 Years	41
8.0 2021-2025 Programme of Maintenance	41

Abbreviations

BDC	Bromsgrove District Council
BDHT	Bromsgrove District Housing Trust
EA	Environment Agency
ES	Environmental Services
LDT	Land Drainage Team
HE	Highways England
MWT	Minor Works Team
NWWM	North Worcestershire Water Management
PT	Place Team
PRT	Parks & Recreation Team
RBC	Redditch Borough Council
SC	Specialist Contractor
SuDS	Sustainable Drainage Systems
WCC	Worcestershire County Council

1.0 Introduction

Bromsgrove District Council owns just under 8km of watercourse, primarily through recreational grounds and as part of adopted open spaces within developments.

In addition to this NWWM, on behalf of BDC, routinely maintain several stretches of watercourse which are either un-registered (and no responsible person has been identified through investigations), in order to manage flood risk in those locations. This brings the total length of watercourse maintained by BDC/NWWM to just over 9km (Note: this report does not cover third party locations at present). This total does not include District owned or maintained ponds, wetlands / SuDS features or County owned roadside ditches.

It has recently been noticed that several areas of watercourse have required fairly major maintenance work urgently to address local flood risk issues; the aim of this document is to pro-actively schedule routine inspections and maintenance of each section of watercourse to avoid such major works and to avoid several locations needing work at the same time – therefore saving costs as well as making maintenance work more efficient. It also allows targeted activities, such as Himalayan Balsam removal, to be proactively scheduled to help reduce growth in future years.

The first year of this plan being used should be viewed as a pilot, where there is likely to be more emphasis on inspections to allow the operatives to (re)familiarise themselves with each site and its specific requirements, and allowing for prioritisation of any maintenance work which may be required. Some activities may need to be undertaken more or less frequently, depending upon season for instance, and this can be refined over time.

This maintenance schedule should be viewed as a “live document” and it may be updated as new sites are adopted or when frequency of a certain activity changes. Any questions or comments should be directed to enquiries@nwwm.org.uk.

2.0 Watercourses Managed by Bromsgrove District Council

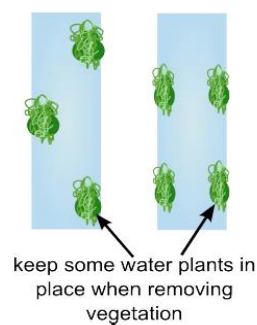
Bromsgrove District Council Owned Land				
Watercourse	Location	Area	Length	Maintained By
Barley Brook	Land at Shelley Close	Catshill	0.16km	PT
Battlefield Brook	Sanders Park	Bromsgrove	0.91km	PRT
Callow Brook	Callowbrook Park	Rubery	0.82km	PT
Callow Brook	St Chads Park	Rubery	0.20km	PT
Gallows Brook	Sweetpool Nature Reserve	Hagley	0.12km	PT
Hollywood Brook	Beaudesert Park	Hollywood	0.14km	PT
Marl Brook	Braces Lane	Marlbrook	0.14km	PT
Marl Brook	Golden Cross Lane car park	Catshill	0.03km	PT
Marl Brook	Lingfield Walk	Catshill	0.39km	PT
Spadesbourne Brook	Brookvale Close	Bromsgrove	0.17km	PT
Spadesbourne Brook	Charford Recreation Ground	Bromsgrove	0.28km	PT
Spadesbourne Brook	Crown Close	Bromsgrove	0.11km	PT
Spadesbourne Brook	Lickey End Recreation Ground	Lickey End	0.23km	PRT
Spadesbourne Brook	Little Heath Lane culvert	Lickey End	0.15km	SC
Spadesbourne Brook	Meadowvale Road	Lickey End	0.21km	PT
Spadesbourne Brook	Roman Way	Bromsgrove	0.18km	PT
Spadesbourne Brook	Spadesbourne Walk	Bromsgrove	0.14km	PRT
Spadesbourne Brook	St John Street (Waitrose)	Bromsgrove	0.17km	PT
Spadesbourne Brook	Watt Close	Bromsgrove	0.29km	PT
Spadesbourne Brook	Yeomans Walk	Bromsgrove	0.14km	PT
Sugar Brook	Buntsford Road	Aston Fields	0.09km	PT
Sugar Brook	Stoke Road	Aston Fields	0.32km	PT
River Rea tributary	Boleyn Road	Rednal	0.67km	PT
Warwick Brook	The Oakhalls	Bromsgrove	0.73km	PT
Willow Brook	Grayshott Close	Bromsgrove	0.10km	PT
TOTAL:			7.69km	
Non-Registered Land				
Watercourse	Location	Area	Length	Maintained By
Callow Brook	Land off New Road	Rubery	0.12km	n/a
Churchill Brook	Beoley Lane	Beoley	0.26km	n/a
Gallows Brook	Market Way	Hagley	0.04km	n/a
Hollywood Brook	Various unregistered land	Hollywood	0.47km	n/a
Marl Brook	Footpath behind Marlbrook Gardens	Catshill	0.15km	n/a
Spadesbourne Brook	Burcot Avenue	Bromsgrove	0.26km	n/a
Upper Arrow tributary	Blackwell Road	Barnt Green	0.11km	n/a
TOTAL:			1.41km	

3.0 Typical Maintenance Requirements

Watercourse maintenance can be split into two categories: frequent and infrequent.

Frequent maintenance (typically required weekly or monthly depending upon the location of the watercourse) includes litter picking and removing any man-made debris from the channel. In an urban environment or near to parks / schools etc this may be required more frequently than in more remote rural areas. Litter and debris tend to accumulate at pinch-points in a channel, typically at trash screens which require cleansing before and after heavy rainfall.

Less frequent maintenance, typically required annually, is vegetation management. It is important to note that vegetation is important for a healthy watercourse, but invasive species (such as Himalayan Balsam) should be removed often during the growing season to limit its growth the following year. In addition, along narrow channels where flood risk is high any vegetation impeding the flow (typically this would be flag iris, fools' watercress or reeds) should be sympathetically maintained. Best practice for vegetation management recommends clearing sections on an annual rotation, therefore never clearing an entire channel of all vegetation at one time. Manual clearance is recommended in place of using machinery or chemicals, however careful use of a water-safe herbicide is sometimes needed for spot-control of plants growing through concrete channels within urban areas, which may over time lead to structural instability. Japanese Knotweed will also require treatment using a water-safe herbicide by a competent person.



Less frequent still, other periodic maintenance requirements include the removal of excess silt (frequency will depend upon the catchment characteristics) and sometimes some pollarding of riparian trees, however this needs to be done with care as tree shade can help to cool water which reduces nutrient problems and can also inhibit aquatic weed growth. Intensive channel maintenance may require prior ecological surveys and in general will be carried out by a specialist contractor.

All maintenance activities should be carried out in a bio-secure manner, following the “Check – Clean – Dry” principles:



4.0 Watercourse Profiles:

4.1 Watercourses Managed by Bromsgrove District Council

4.1.1 Barley Brook; Shelley Close to Stourbridge Road, Catshill



Length of watercourse: 0.16 km

Special Features: n/a

Activity	Frequency	Timing	Responsibility
Litter picking	3 monthly	Jan-Dec	Place
Himalayan Balsam pulling where present *	Monthly in growing season	Mar-Jun	Framework Contractor
Mowing / flailing more than 2m from bank top	As required	Jan-Dec	Place
Bank top vegetation strimming **	Annually (where required)	Aug-Oct	Place
Bank face vegetation strimming ***	Annually – no more than 1/3 per year	Sep-Oct	Place & Frameworks Contractor
In-channel vegetation removal ***	Annually – no more than 1/3 per year	Sep-Oct	Framework Contractor
Silt removal (Watercourse) ****	If required – no more than 1/3 per year	Sep-Feb	Framework Contractor

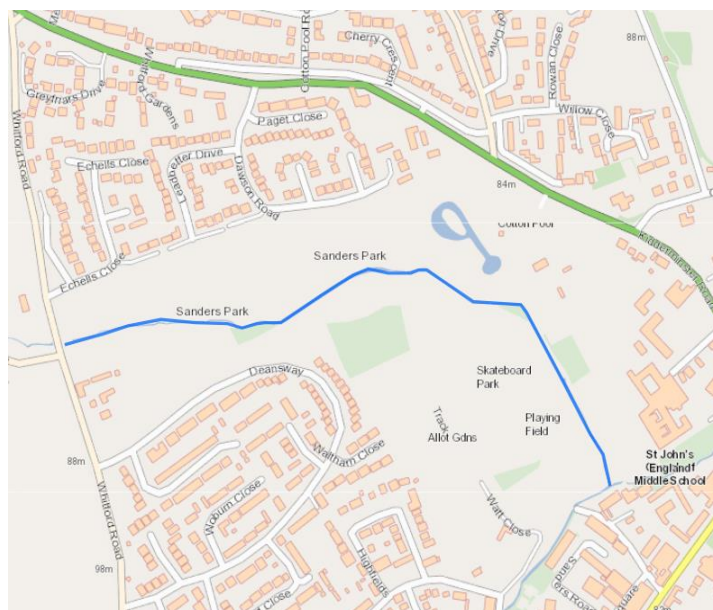
* Himalayan Balsam should be pulled before the plant flowers and seed pods develop; the times above are a general indication.

** Bank top vegetation (within 2m of the top of bank) should be cut once per year to a height of no less than 20cm.

*** Bank face and in channel vegetation should be carried out no more than once per year, and only 1/3 of the vegetation cut in any year.

**** Silt may be removed where it is causing an impediment to flow, but again no more than 1/3 of an area in any year.

4.1.2 Battlefield Brook; Sanders Park, Bromsgrove



Length of watercourse: 0.91 km

Special Features: offline nature pool (connected via culvert with screen), water vole habitat

Activity	Frequency	Timing	Responsibility
Litter picking	Monthly	Jan-Dec	Parks
Trash Screen clearance	Quarterly / after heavy rain	Jan-Dec	Parks & Framework Contractor
Himalayan Balsam pulling where present *	Monthly in growing season	Mar-Jun	Framework Contractor
Mowing / flailing more than 2m from bank top	As required	Jan-Dec	Parks
Bank top vegetation strimming **	Annually	Aug-Oct	Parks
Bank face vegetation strimming ***	Annually – no more than 1/3 per year	Sep-Oct	Parks & Framework Contractor
In-channel vegetation removal ***	If required – no more than 1/3 per year	Sep-Oct	Parks & Framework Contractor
Silt removal (Watercourse) ****	If required – no more than 1/3 per year	Sep-Oct	Framework Contractor
Silt removal (Ponds) ****	Ten yearly – no more than 1/3 per year	Sep-Oct	Specialist Contractor
Culvert Inspection (CCTV)	5-10 yearly	Jan-Dec	Specialist Contractor
Culvert Repair / Maintenance	As required	Jan-Dec	Specialist Contractor

* Himalayan Balsam should be pulled before the plant flowers and seed pods develop; the times above are a general indication.

** Bank top vegetation (within 2m of the top of bank) should be cut once per year to a height of no less than 20cm.

*** Bank face and in channel vegetation should be carried out no more than once per year, and only 1/3 of the vegetation cut in any year.

**** Silt may be removed where it is causing an impediment to flow, but again no more than 1/3 of an area in any year.

4.1.3 Callow Brook; Brook Road Park, Rubery



Length of watercourse: 0.85 km

Special Features: two flood relief pools, 1 culvert and a trash screen

Activity	Frequency	Timing	Responsibility
Litter picking	Weekly	Jan-Dec	Place
Trash Screen clearance	Monthly / after heavy rain	Jan-Dec	WCC & Framework Contractor
Mowing / flailing more than 2m from bank top	As required	Jan-Dec	Place
Bank top vegetation strimming **	Annually	Aug-Oct	Place
Bank face vegetation strimming ***	Annually – no more than 1/3 per year	Sep-Oct	Place & Framework Contractor
In-channel vegetation removal ***	If required – no more than 1/3 per year	Sep-Oct	Place & Framework Contractor
Silt removal (Watercourse) ****	If required – no more than 1/3 per year	Sep-Oct	Framework Contractor
Silt removal (Ponds) ****	5-10 yearly – no more than 1/3 per year	Sep-Oct	Specialist Contractor
Culvert Inspection (CCTV)	Fifteen yearly	Jan-Dec	Specialist Contractor
Culvert Repair / Maintenance	As required	Jan-Dec	Specialist Contractor

** Bank top vegetation (within 2m of the top of bank) should be cut once per year to a height of no less than 20cm.

*** Bank face and in channel vegetation should be carried out no more than once per year, and only 1/3 of the vegetation cut in any year.

**** Silt may be removed where it is causing an impediment to flow, but again no more than 1/3 of an area in any year.

4.1.4 Callow Brook; St Chadds Park, Rubery



Length of watercourse: 0.20 km

Special Features: trash screen

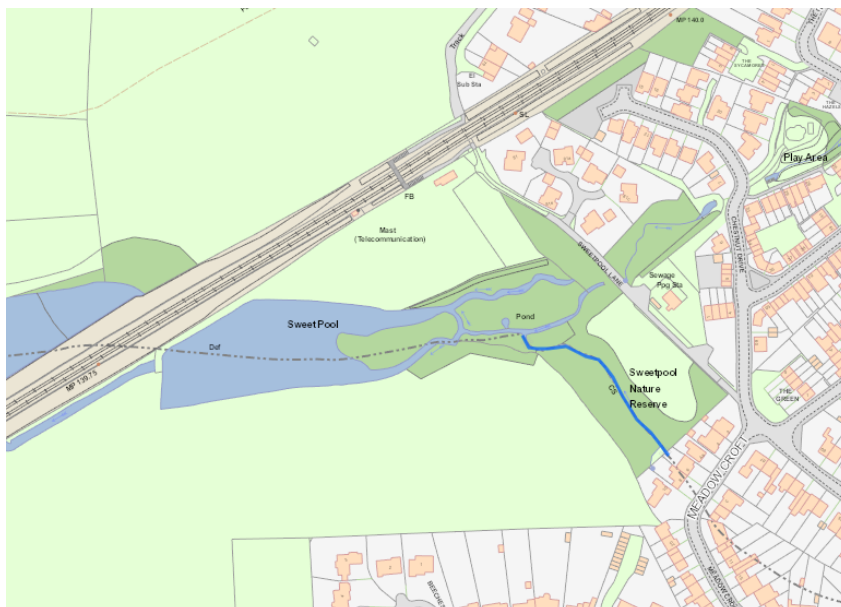
Activity	Frequency	Timing	Responsibility
Litter picking	Monthly	Jan-Dec	Place
Trash Screen clearance	Monthly / after heavy rain	Jan-Dec	Place & Framework Contractor
Japanese Knotweed Treatment	As required	Aug-Nov	Place
Mowing / flailing more than 2m from bank top	As required	Jan-Dec	Place
Bank top vegetation strimming **	Annually	Aug-Oct	Place
Bank face vegetation strimming ***	Annually – no more than 1/3 per year	Sep-Oct	Place & Framework Contractor
In-channel vegetation removal ***	If required – no more than 1/3 per year	Sep-Oct	Framework Contractor
Silt removal (Watercourse) ****	If required – no more than 1/3 per year	Sep-Oct	Framework Contractor

** Bank top vegetation (within 2m of the top of bank) should be cut once per year to a height of no less than 20cm.

*** Bank face and in channel vegetation should be carried out no more than once per year, and only 1/3 of the vegetation cut in any year.

**** Silt may be removed where it is causing an impediment to flow, but again no more than 1/3 of an area in any year.

4.1.5 Gallows Brook, Sweetpool Nature Reserve, Hagley



Length of watercourse: 0.12 km

Special Features: Outlet from culvert coming from Meadowcroft

Activity	Frequency	Timing	Responsibility
Litter picking	Monthly	Jan-Dec	Place & Parish Council
Check culvert outlet is unobstructed	Monthly	Jan-Dec	Framework Contractor
Himalayan Balsam pulling where present *	Monthly in growing season	Mar-Jun	Framework Contractor
Japanese Knotweed Treatment	As required	Aug-Nov	Place
Mowing / flailing more than 2m from bank top	As required	Jan-Dec	Parish Council
Bank top vegetation strimming **	Annually	Aug-Oct	Place
Bank face vegetation strimming ***	Annually – no more than 1/3 per year	Sep-Oct	Place & Framework Contractor
In-channel vegetation removal ***	If required – no more than 1/3 per year	Sep-Oct	Framework Contractor
Silt removal (Watercourse) ****	If required – no more than 1/3 per year	Sep-Oct	Framework Contractor

* Himalayan Balsam should be pulled before the plant flowers and seed pods develop; the times above are a general indication.

** Bank top vegetation (within 2m of the top of bank) should be cut once per year to a height of no less than 20cm.

*** Bank face and in channel vegetation should be carried out no more than once per year, and only 1/3 of the vegetation cut in any year.

**** Silt may be removed where it is causing an impediment to flow, but again no more than 1/3 of an area in any year.

4.1.6 Hollywood Brook; Beadesert Nature Park, Wythall



Length of watercourse: 0.14 km

Special Features: nature pools, trash screen, water level monitor

Activity	Frequency	Timing	Responsibility
Litter picking	Fortnightly	Jan-Dec	Place
Trash Screen clearance	Monthly / after heavy rain	Jan-Dec	Place & Framework Contractor
Checking & Clearing woody debris dam	Monthly / after heavy rain	Jan-Dec	Framework Contractor
Japanese Knotweed Treatment	As required	Aug-Nov	Place
Mowing / flailing more than 2m from bank top	As required	Jan-Dec	Place
Bank top vegetation strimming **	Annually	Aug-Oct	Place
Bank face vegetation strimming ***	Annually – no more than 1/3 per year	Sep-Oct	Place & Framework Contractor
In-channel vegetation removal ***	If required – no more than 1/3 per year	Sep-Oct	Framework Contractor
Silt removal (Watercourse) ****	If required – no more than 1/3 per year	Sep-Oct	Framework Contractor
Silt removal (Ponds) ****	If required – no more than 1/3 per year	Sep-Oct	Specialist Contractor

** Bank top vegetation (within 2m of the top of bank) should be cut once per year to a height of no less than 20cm.

*** Bank face and in channel vegetation should be carried out no more than once per year, and only 1/3 of the vegetation cut in any year.

**** Silt may be removed where it is causing an impediment to flow, but again no more than 1/3 of an area in any year.

4.1.7 Marl Brook; Braces Lane Recreation Ground, Catshill



Length of watercourse: 0.14 km

Special Features: n/a

Activity	Frequency	Timing	Responsibility
Litter picking	Monthly	Jan-Dec	Place
Mowing / flailing more than 2m from bank top	As required	Jan-Dec	Place
Bank top vegetation strimming **	Annually	Aug-Oct	Place
Bank face vegetation strimming ***	Annually – no more than 1/3 per year	Sep-Oct	Place & Framework Contractor
In-channel vegetation removal ***	If required – no more than 1/3 per year	Sep-Oct	Framework Contractor
Silt removal (Watercourse) ****	If required – no more than 1/3 per year	Sep-Oct	Framework Contractor

** Bank top vegetation (within 2m of the top of bank) should be cut once per year to a height of no less than 20cm.

*** Bank face and in channel vegetation should be carried out no more than once per year, and only 1/3 of the vegetation cut in any year.

**** Silt may be removed where it is causing an impediment to flow, but again no more than 1/3 of an area in any year.

4.1.8 Marl Brook; Golden Cross Lane Car Park, Catshill



Length of watercourse: 0.03 km

Special Features: trash screen

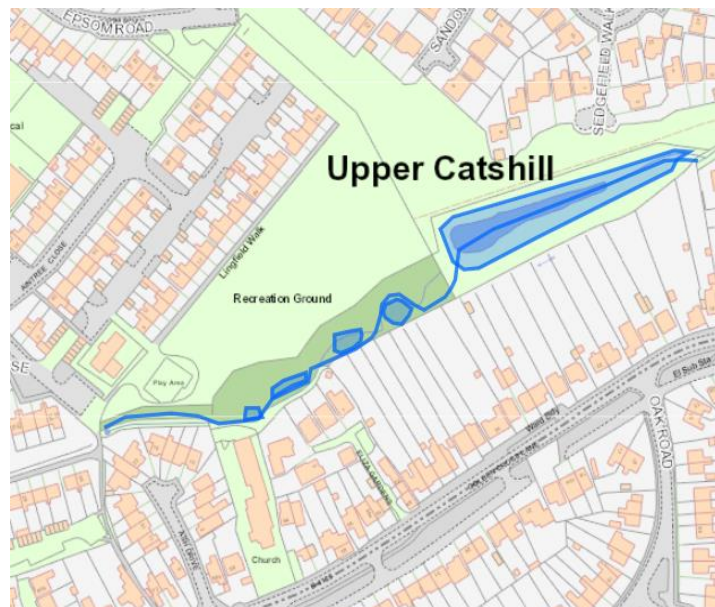
Activity	Frequency	Timing	Responsibility
Litter picking	Fortnightly	Jan-Dec	Place
Trash Screen clearance	Monthly / after heavy rain	Jan-Dec	Place & Framework Contractor
Bank top vegetation strimming **	Annually	Aug-Oct	Place
Bank face vegetation strimming ***	Annually – no more than 1/3 per year	Sep-Oct	Place & Framework Contractor
In-channel vegetation removal ***	If required – no more than 1/3 per year	Sep-Oct	Framework Contractor
Silt removal (Watercourse) ****	If required – no more than 1/3 per year	Sep-Oct	Framework Contractor

** Bank top vegetation (within 2m of the top of bank) should be cut once per year to a height of no less than 20cm.

*** Bank face and in channel vegetation should be carried out no more than once per year, and only 1/3 of the vegetation cut in any year.

**** Silt may be removed where it is causing an impediment to flow, but again no more than 1/3 of an area in any year.

4.1.9 Marl Brook; Lingfield Walk Recreation Ground, Catshill



Length of watercourse: 0.39 km

Special Features: flood storage pool, 5 nature pools, 5 sluices, 1 culvert

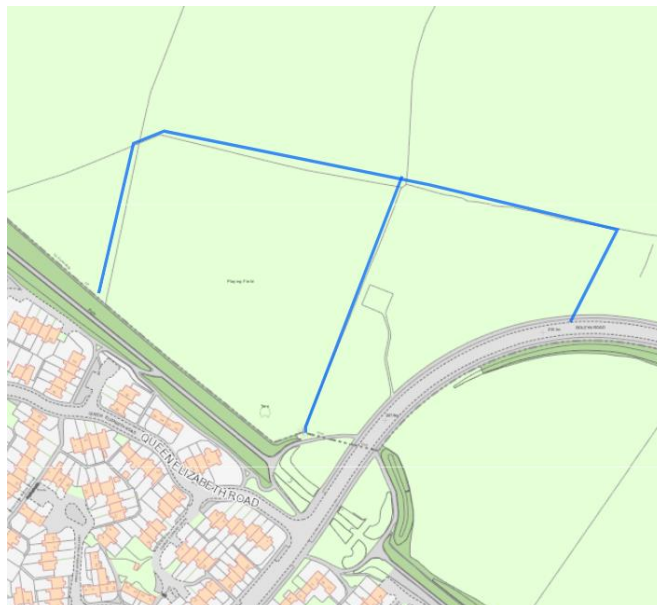
Activity	Frequency	Timing	Responsibility
Litter picking	Monthly	Jan-Dec	Place
Sluice clearance	Monthly / after heavy rain	Jan-Dec	Framework Contractor
Mowing / flailing more than 2m from bank top	As required	Jan-Dec	Place
Bank top vegetation strimming **	Annually	Aug-Oct	Place
Bank face vegetation strimming ***	Annually – no more than 1/3 per year	Sep-Oct	Place & Framework Contractor
In-channel vegetation removal ***	If required – no more than 1/3 per year	Sep-Oct	Framework Contractor
Silt removal (Watercourse) ****	If required – no more than 1/3 per year	Sep-Oct	Framework Contractor
Silt removal (Ponds) ****	5-10 yearly – no more than 1/3 per year	Sep-Oct	Specialist Contractor
Culvert Inspection (CCTV)	Fifteen yearly	Jan-Dec	Specialist Contractor
Culvert & Sluice Repair / Maintenance	As required	Jan-Dec	Specialist Contractor

** Bank top vegetation (within 2m of the top of bank) should be cut once per year to a height of no less than 20cm.

*** Bank face and in channel vegetation should be carried out no more than once per year, and only 1/3 of the vegetation cut in any year.

**** Silt may be removed where it is causing an impediment to flow, but again no more than 1/3 of an area in any year.

4.1.10 River Rea Tributary; Boleyn Road, Rednal



Length of watercourse: 0.67 km

Special Features: n/a

Activity	Frequency	Timing	Responsibility
Litter picking	6 monthly	Jan-Dec	Place
Mowing / flailing more than 2m from bank top	As required	Jan-Dec	Place
Bank top vegetation strimming **	Annually	Aug-Oct	Place
Bank face vegetation strimming ***	Annually – no more than 1/3 per year	Sep-Oct	Place & Framework Contractor
In-channel vegetation removal ***	If required – no more than 1/3 per year	Sep-Oct	Framework Contractor
Silt removal (Watercourse) ****	If required – no more than 1/3 per year	Sep-Oct	Framework Contractor

** Bank top vegetation (within 2m of the top of bank) should be cut once per year to a height of no less than 20cm.

*** Bank face and in channel vegetation should be carried out no more than once per year, and only 1/3 of the vegetation cut in any year.

**** Silt may be removed where it is causing an impediment to flow, but again no more than 1/3 of an area in any year.

4.1.11 Spadesbourne Brook; Brookvale Close, Bromsgrove



Length of watercourse: 0.17 km

Special Features: n/a

Activity	Frequency	Timing	Responsibility
Litter picking	Monthly	Jan-Dec	Place
Himalayan Balsam pulling where present *	Monthly in growing season	Mar-Jun	Framework Contractor
Mowing / flailing more than 2m from bank top	As required	Jan-Dec	Place
Bank top vegetation strimming **	Annually	Aug-Oct	Place
Bank face vegetation strimming ***	Annually – no more than 1/3 per year	Sep-Oct	Place & Framework Contractor
In-channel vegetation removal ***	If required – no more than 1/3 per year	Sep-Oct	Framework Contractor
Silt removal (Watercourse) ****	If required – no more than 1/3 per year	Sep-Oct	Framework Contractor

* Himalayan Balsam should be pulled before the plant flowers and seed pods develop; the times above are a general indication.

** Bank top vegetation (within 2m of the top of bank) should be cut once per year to a height of no less than 20cm.

*** Bank face and in channel vegetation should be carried out no more than once per year, and only 1/3 of the vegetation cut in any year.

**** Silt may be removed where it is causing an impediment to flow, but again no more than 1/3 of an area in any year.

4.1.12 Spadesbourne Brook; Charford Road Recreation Ground, Bromsgrove



Length of watercourse: 0.28 km

Special Features: n/a

Activity	Frequency	Timing	Responsibility
Litter picking	Fortnightly	Jan-Dec	Place
Himalayan Balsam pulling where present *	Monthly in growing season	Mar-Jun	Framework Contractor
Mowing / flailing more than 2m from bank top	As required	Jan-Dec	Place
Bank top vegetation strimming **	Annually	Aug-Oct	Place
Bank face vegetation strimming ***	Annually – no more than 1/3 per year	Sep-Oct	Place & Framework Contractor
In-channel vegetation removal ***	If required – no more than 1/3 per year	Sep-Oct	Framework Contractor
Silt removal (Watercourse) ****	If required – no more than 1/3 per year	Sep-Oct	Framework Contractor

* Himalayan Balsam should be pulled before the plant flowers and seed pods develop; the times above are a general indication.

** Bank top vegetation (within 2m of the top of bank) should be cut once per year to a height of no less than 20cm.

*** Bank face and in channel vegetation should be carried out no more than once per year, and only 1/3 of the vegetation cut in any year.

**** Silt may be removed where it is causing an impediment to flow, but again no more than 1/3 of an area in any year.

4.1.13 Spadesbourne Brook; Crown Close, Bromsgrove



Length of watercourse: 0.11 km

Special Features: trash screen

Activity	Frequency	Timing	Responsibility
Litter picking	Weekly	Jan-Dec	Place
Trash Screen clearance	Monthly / after heavy rain	Jan-Dec	Place & Framework Contractor
Himalayan Balsam pulling where present *	Monthly in growing season	Mar-Jun	Framework Contractor
Mowing / flailing more than 2m from bank top	As required	Jan-Dec	Place
Bank top vegetation strimming **	Annually	Aug-Oct	Place
Bank face vegetation strimming ***	Annually – no more than 1/3 per year	Sep-Oct	Place & Framework Contractor
In-channel vegetation removal ***	If required – no more than 1/3 per year	Sep-Oct	Framework Contractor
Silt removal (Watercourse) ****	If required – no more than 1/3 per year	Sep-Oct	Framework Contractor

* Himalayan Balsam should be pulled before the plant flowers and seed pods develop; the times above are a general indication.

** Bank top vegetation (within 2m of the top of bank) should be cut once per year to a height of no less than 20cm.

*** Bank face and in channel vegetation should be carried out no more than once per year, and only 1/3 of the vegetation cut in any year.

**** Silt may be removed where it is causing an impediment to flow, but again no more than 1/3 of an area in any year.

4.1.14 Spadesbourne Brook; Lickey End Recreation Ground, Lickey End



Length of watercourse: 0.23 km

Special Features: wetland area, 1 culvert, water vole habitat

Activity	Frequency	Timing	Responsibility
Litter picking	Monthly	Jan-Dec	Parks
Himalayan Balsam pulling where present *	Monthly in growing season	Mar-Jun	Framework Contractor
Mowing / flailing more than 2m from bank top	As required	Jan-Dec	Parks
Bank top vegetation strimming **	Annually	Aug-Oct	Parks
Bank face vegetation strimming ***	Annually – no more than 1/3 per year	Sep-Oct	Parks & Framework Contractor
In-channel vegetation removal ***	If required – no more than 1/3 per year	Sep-Oct	Framework Contractor
Silt removal (Watercourse) ****	If required – no more than 1/3 per year	Sep-Oct	Framework Contractor
Silt removal (Ponds) ****	If required – no more than 1/3 per year	Sep-Oct	Specialist Contractor

* Himalayan Balsam should be pulled before the plant flowers and seed pods develop; the times above are a general indication.

** Bank top vegetation (within 2m of the top of bank) should be cut once per year to a height of no less than 20cm.

*** Bank face and in channel vegetation should be carried out no more than once per year, and only 1/3 of the vegetation cut in any year.

**** Silt may be removed where it is causing an impediment to flow, but again no more than 1/3 of an area in any year.

4.1.15 Spadesbourne Brook; Little Heath Lane, Lickey End



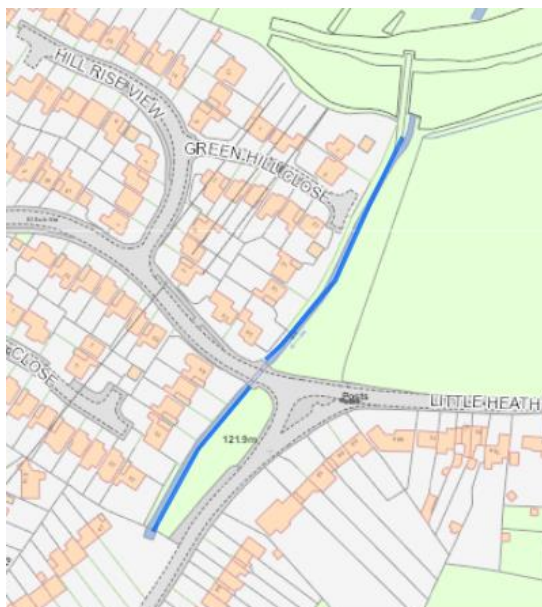
Length of watercourse: 0.15 km

Special Features: cascade and twin culverts

Activity	Frequency	Timing	Responsibility
Trash Screen clearance	Monthly / after heavy rain	Jan-Dec	Place & Framework Contractor
Silt removal (Watercourse) ****	If required – no more than 1/3 per year	Sep-Oct	Framework Contractor
Culvert Inspection (CCTV)	Ten yearly	Jan-Dec	Specialist Contractor
Culvert Repair / Maintenance	As required	Jan-Dec	Specialist Contractor

**** Silt may be removed where it is causing an impediment to flow, but again no more than 1/3 of an area in any year.

4.1.16 Spadesbourne Brook; Meadowvale Road, Lickey End



Length of watercourse: 0.21 km

Special Features: trash screen and weed screen

Activity	Frequency	Timing	Responsibility
Litter picking	Monthly	Jan-Dec	Place
Trash Screen clearance	Monthly / after heavy rain	Jan-Dec	Place & Framework Contractor
Himalayan Balsam pulling where present *	Monthly in growing season	Mar-Jun	Framework Contractor
Mowing / flailing more than 2m from bank top	As required	Jan-Dec	Place
Bank top vegetation strimming **	Annually	Aug-Oct	Place
Bank face vegetation strimming ***	Annually – no more than 1/3 per year	Sep-Oct	Place & Framework Contractor
In-channel vegetation removal ***	If required – no more than 1/3 per year	Sep-Oct	Framework Contractor
Silt removal (Watercourse) ****	If required – no more than 1/3 per year	Sep-Oct	Framework Contractor

* Himalayan Balsam should be pulled before the plant flowers and seed pods develop; the times above are a general indication.

** Bank top vegetation (within 2m of the top of bank) should be cut once per year to a height of no less than 20cm.

*** Bank face and in channel vegetation should be carried out no more than once per year, and only 1/3 of the vegetation cut in any year.

**** Silt may be removed where it is causing an impediment to flow, but again no more than 1/3 of an area in any year.

4.1.17 Spadesbourne Brook; Roman Way, Bromsgrove



Length of watercourse: 0.18 km

Special Features: n/a

Activity	Frequency	Timing	Responsibility
Litter picking	Monthly	Jan-Dec	Place
Himalayan Balsam pulling where present *	Monthly in growing season	Mar-Jun	Framework Contractor
Bank top vegetation strimming **	Annually	Aug-Oct	Place
Bank face vegetation strimming ***	Annually – no more than 1/3 per year	Sep-Oct	Place & Framework Contractor
In-channel vegetation removal ***	If required – no more than 1/3 per year	Sep-Oct	Framework Contractor
Silt removal (Watercourse) ****	If required – no more than 1/3 per year	Sep-Oct	Framework Contractor

* Himalayan Balsam should be pulled before the plant flowers and seed pods develop; the times above are a general indication.

** Bank top vegetation (within 2m of the top of bank) should be cut once per year to a height of no less than 20cm.

*** Bank face and in channel vegetation should be carried out no more than once per year, and only 1/3 of the vegetation cut in any year.

**** Silt may be removed where it is causing an impediment to flow, but again no more than 1/3 of an area in any year.

4.1.18 Spadesbourne Brook; Spadesbourne Walk, Bromsgrove



Length of watercourse: 0.14 km

Special Features: n/a

Activity	Frequency	Timing	Responsibility
Litter picking	Fortnightly	Jan-Dec	Parks
Himalayan Balsam pulling where present *	Monthly in growing season	Mar-Jun	Framework Contractor
Mowing / flailing more than 2m from bank top	As required	Jan-Dec	Parks
Bank top vegetation strimming **	Annually	Aug-Oct	Parks
Bank face vegetation strimming ***	Annually – no more than 1/3 per year	Sep-Oct	Parks & Framework Contractor
In-channel vegetation removal ***	If required – no more than 1/3 per year	Sep-Oct	Framework Contractor
Silt removal (Watercourse) ****	If required – no more than 1/3 per year	Sep-Oct	Framework Contractor

* Himalayan Balsam should be pulled before the plant flowers and seed pods develop; the times above are a general indication.

** Bank top vegetation (within 2m of the top of bank) should be cut once per year to a height of no less than 20cm.

*** Bank face and in channel vegetation should be carried out no more than once per year, and only 1/3 of the vegetation cut in any year.

**** Silt may be removed where it is causing an impediment to flow, but again no more than 1/3 of an area in any year.

4.1.19 Spadesbourne Brook; St John Street (Waitrose), Bromsgrove



Length of watercourse: 0.08 km

Special Features: 2 culverts

Activity	Frequency	Timing	Responsibility
Litter picking	Monthly	Jan-Dec	Place
Himalayan Balsam pulling where present *	Monthly in growing season	Mar-Jun	Framework Contractor
Bank top vegetation strimming **	Annually	Aug-Oct	Place
Bank face vegetation strimming ***	Annually – no more than 1/3 per year	Sep-Oct	Place & Framework Contractor
In-channel vegetation removal ***	If required – no more than 1/3 per year	Sep-Oct	Framework Contractor
Silt removal (Watercourse) ****	If required – no more than 1/3 per year	Sep-Oct	Framework Contractor
Culvert Inspection (CCTV)	Ten yearly	Jan-Dec	Specialist Contractor
Culvert Repair / Maintenance	As required	Jan-Dec	Specialist Contractor

* Himalayan Balsam should be pulled before the plant flowers and seed pods develop; the times above are a general indication.

** Bank top vegetation (within 2m of the top of bank) should be cut once per year to a height of no less than 20cm.

*** Bank face and in channel vegetation should be carried out no more than once per year, and only 1/3 of the vegetation cut in any year.

**** Silt may be removed where it is causing an impediment to flow, but again no more than 1/3 of an area in any year.

4.1.20 Spadesbourne Brook; Watt Close, Bromsgrove



Length of watercourse: 0.29 km

Special Features: n/a

Activity	Frequency	Timing	Responsibility
Litter picking	Fortnightly	Jan-Dec	Place
Himalayan Balsam pulling where present *	Monthly in growing season	Mar-Jun	Framework Contractor
Mowing / flailing more than 2m from bank top	As required	Jan-Dec	Place
Bank top vegetation strimming **	Annually	Aug-Oct	Place
Bank face vegetation strimming ***	Annually – no more than 1/3 per year	Sep-Oct	Place & Framework Contractor
In-channel vegetation removal ***	If required – no more than 1/3 per year	Sep-Oct	Framework Contractor
Silt removal (Watercourse) ****	If required – no more than 1/3 per year	Sep-Oct	Framework Contractor

* Himalayan Balsam should be pulled before the plant flowers and seed pods develop; the times above are a general indication.

** Bank top vegetation (within 2m of the top of bank) should be cut once per year to a height of no less than 20cm.

*** Bank face and in channel vegetation should be carried out no more than once per year, and only 1/3 of the vegetation cut in any year.

**** Silt may be removed where it is causing an impediment to flow, but again no more than 1/3 of an area in any year.

4.1.21 Spadesbourne Brook; Yeomans, Bromsgrove



Length of watercourse: 0.14 km

Special Features: n/a

Activity	Frequency	Timing	Responsibility
Litter picking	Fortnightly	Jan-Dec	Place
Himalayan Balsam pulling where present *	Monthly in growing season	Mar-Jun	Framework Contractor
Mowing / flailing more than 2m from bank top	As required	Jan-Dec	Place
Bank top vegetation strimming **	Annually	Aug-Oct	Place
Bank face vegetation strimming ***	Annually – no more than 1/3 per year	Sep-Oct	Place & Framework Contractor
In-channel vegetation removal ***	If required – no more than 1/3 per year	Sep-Oct	Framework Contractor
Silt removal (Watercourse) ****	If required – no more than 1/3 per year	Sep-Oct	Framework Contractor

* Himalayan Balsam should be pulled before the plant flowers and seed pods develop; the times above are a general indication.

** Bank top vegetation (within 2m of the top of bank) should be cut once per year to a height of no less than 20cm.

*** Bank face and in channel vegetation should be carried out no more than once per year, and only 1/3 of the vegetation cut in any year.

**** Silt may be removed where it is causing an impediment to flow, but again no more than 1/3 of an area in any year.

4.1.22 Sugar Brook; Buntsford Road, Bromsgrove



Length of watercourse: 0.09 km

Special Features: n/a

Activity	Frequency	Timing	Responsibility
Litter picking	3 monthly	Jan-Dec	Place
Himalayan Balsam pulling where present *	Monthly in growing season	Mar-Jun	Framework Contractor
Mowing / flailing more than 2m from bank top	As required	Jan-Dec	Place
Bank top vegetation strimming **	Annually	Aug-Oct	Place
Bank face vegetation strimming ***	Annually – no more than 1/3 per year	Sep-Oct	Place & Framework Contractor
In-channel vegetation removal ***	If required – no more than 1/3 per year	Sep-Oct	Framework Contractor
Silt removal (Watercourse) ****	If required – no more than 1/3 per year	Sep-Oct	Framework Contractor

* Himalayan Balsam should be pulled before the plant flowers and seed pods develop; the times above are a general indication.

** Bank top vegetation (within 2m of the top of bank) should be cut once per year to a height of no less than 20cm.

*** Bank face and in channel vegetation should be carried out no more than once per year, and only 1/3 of the vegetation cut in any year.

**** Silt may be removed where it is causing an impediment to flow, but again no more than 1/3 of an area in any year.

4.1.23 Sugar Brook; Stoke Road, Bromsgrove



Length of watercourse: 0.32 km

Special Features: n/a

Activity	Frequency	Timing	Responsibility
Litter picking	Monthly	Jan-Dec	Place
Himalayan Balsam pulling where present *	Monthly in growing season	Mar-Jun	Framework Contractor
Mowing / flailing more than 2m from bank top	As required	Jan-Dec	Place
Bank top vegetation strimming **	Annually	Aug-Oct	Place
Bank face vegetation strimming ***	Annually – no more than 1/3 per year	Sep-Oct	Place & Framework Contractor
In-channel vegetation removal ***	If required – no more than 1/3 per year	Sep-Oct	Framework Contractor
Silt removal (Watercourse) ****	If required – no more than 1/3 per year	Sep-Oct	Framework Contractor

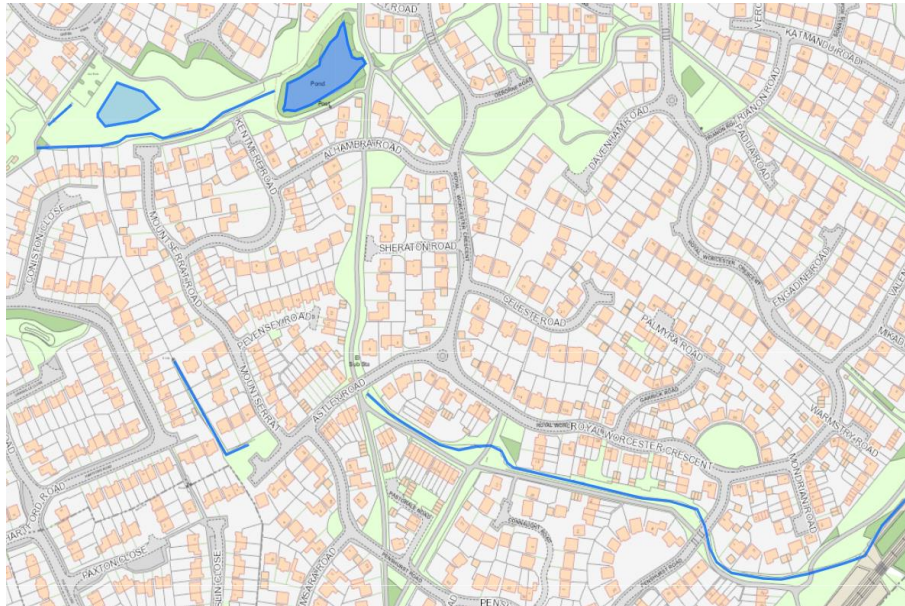
* Himalayan Balsam should be pulled before the plant flowers and seed pods develop; the times above are a general indication.

** Bank top vegetation (within 2m of the top of bank) should be cut once per year to a height of no less than 20cm.

*** Bank face and in channel vegetation should be carried out no more than once per year, and only 1/3 of the vegetation cut in any year.

**** Silt may be removed where it is causing an impediment to flow, but again no more than 1/3 of an area in any year.

4.1.24 Warwick Brook; The Oakhalls Estate, Bromsgrove



Length of watercourse: 0.73 km

Special Features: trash screens, culverts, balancing areas, pond

Activity	Frequency	Timing	Responsibility
Litter picking	Monthly	Jan-Dec	Place
Trash Screen clearance	Monthly / after heavy rain	Jan-Dec	Place & Framework Contractor
Mowing / flailing more than 2m from bank top	As required	Jan-Dec	Place
Bank top vegetation strimming **	Annually	Aug-Oct	Place
Bank face vegetation strimming ***	Annually – no more than 1/3 per year	Sep-Oct	Place & Framework Contractor
In-channel vegetation removal ***	If required – no more than 1/3 per year	Sep-Oct	Framework Contractor
Silt removal (Watercourse) ****	If required – no more than 1/3 per year	Sep-Oct	Framework Contractor
Silt removal (Ponds) ****	If required – no more than 1/3 per year	Sep-Oct	Specialist Contractor
Culvert Inspection (CCTV)	ten yearly	Jan-Dec	Specialist Contractor
Culvert Repair / Maintenance	As required	Jan-Dec	Specialist Contractor

** Bank top vegetation (within 2m of the top of bank) should be cut once per year to a height of no less than 20cm.

*** Bank face and in channel vegetation should be carried out no more than once per year, and only 1/3 of the vegetation cut in any year.

**** Silt may be removed where it is causing an impediment to flow, but again no more than 1/3 of an area in any year.

4.1.25 Willow Brook; Grayshott Close, Bromsgrove



Length of watercourse: 0.10 km

Special Features: trash screen

Activity	Frequency	Timing	Responsibility
Litter picking	Fortnightly	Jan-Dec	Place
Trash Screen clearance	Monthly / after heavy rain	Jan-Dec	Place & Framework Contractor
Mowing / flailing more than 2m from bank top	As required	Jan-Dec	Place
Bank top vegetation strimming **	Annually	Aug-Oct	Place
Bank face vegetation strimming ***	Annually – no more than 1/3 per year	Sep-Oct	Place & Framework Contractor
In-channel vegetation removal ***	If required – no more than 1/3 per year	Sep-Oct	Framework Contractor
Silt removal (Watercourse) ****	If required – no more than 1/3 per year	Sep-Oct	Framework Contractor

** Bank top vegetation (within 2m of the top of bank) should be cut once per year to a height of no less than 20cm.

*** Bank face and in channel vegetation should be carried out no more than once per year, and only 1/3 of the vegetation cut in any year.

**** Silt may be removed where it is causing an impediment to flow, but again no more than 1/3 of an area in any year.

4.2 Watercourses on Unregistered Land

4.2.1 Callow Brook; Land at New Road, Rubery



Length of watercourse: 0.12 km

Special Features: trash screen

Activity	Frequency	Timing	Responsibility
Litter picking	Monthly	Jan-Dec	Framework Contractor
Trash Screen clearance	Monthly / after heavy rain	Jan-Dec	Place & Framework Contractor
Bank face vegetation strimming ***	Annually – no more than 1/3 per year	Sep-Oct	Framework Contractor
In-channel vegetation removal ***	If required – no more than 1/3 per year	Sep-Oct	Framework Contractor
Silt removal (Watercourse) ****	If required – no more than 1/3 per year	Sep-Oct	Framework Contractor

* Himalayan Balsam should be pulled before the plant flowers and seed pods develop; the times above are a general indication.

*** Bank face and in channel vegetation should be carried out no more than once per year, and only 1/3 of the vegetation cut in any year.

**** Silt may be removed where it is causing an impediment to flow, but again no more than 1/3 of an area in any year.

4.2.2 Churchill Brook; Beoley Lane, Beoley



Length of watercourse: 0.26 km

Special Features: n/a

Activity	Frequency	Timing	Responsibility
Litter picking	6 monthly	Jan-Dec	Framework Contractor
Bank face vegetation strimming ***	Annually – no more than 1/3 per year	Sep-Oct	Framework Contractor
In-channel vegetation removal ***	If required – no more than 1/3 per year	Sep-Oct	Framework Contractor
Silt removal (Watercourse) ****	If required – no more than 1/3 per year	Sep-Oct	Framework Contractor

* Himalayan Balsam should be pulled before the plant flowers and seed pods develop; the times above are a general indication.

*** Bank face and in channel vegetation should be carried out no more than once per year, and only 1/3 of the vegetation cut in any year.

**** Silt may be removed where it is causing an impediment to flow, but again no more than 1/3 of an area in any year.

4.2.3 Gallows Brook; Markey Way, Hagley



Length of watercourse: 0.04 km

Special Features: twin culvert outlets upstream and culvert inlet downstream

Activity	Frequency	Timing	Responsibility
Litter picking	3 monthly	Jan-Dec	Framework Contractor
Check culvert outlets / inlet clear	Monthly / after heavy rain	Jan-Dec	Framework Contractor
Himalayan Balsam pulling where present *	Weekly in growing season	Mar-Jun	Framework Contractor
Bank face vegetation strimming ***	Annually – no more than 1/3 per year	Sep-Oct	Framework Contractor
In-channel vegetation removal ***	If required – no more than 1/3 per year	Sep-Oct	Framework Contractor
Silt removal (Watercourse) ****	If required – no more than 1/3 per year	Sep-Oct	Framework Contractor

* Himalayan Balsam should be pulled before the plant flowers and seed pods develop; the times above are a general indication.

*** Bank face and in channel vegetation should be carried out no more than once per year, and only 1/3 of the vegetation cut in any year.

**** Silt may be removed where it is causing an impediment to flow, but again no more than 1/3 of an area in any year.

4.2.4 Hollywood Brook; Various Parcels of Land, Wythall



Length of watercourse: 0.47 km

Special Features: n/a

Activity	Frequency	Timing	Responsibility
Litter picking	Monthly	Jan-Dec	Framework Contractor
Trash Screen clearance	Monthly / after heavy rain	Jan-Dec	Framework Contractor
Bank face vegetation strimming ***	Annually – no more than 1/3 per year	Sep-Oct	Framework Contractor
In-channel vegetation removal ***	If required – no more than 1/3 per year	Sep-Oct	Framework Contractor
Silt removal (Watercourse) ****	If required – no more than 1/3 per year	Sep-Oct	Framework Contractor

** Bank top vegetation (within 2m of the top of bank) should be cut once per year to a height of no less than 20cm.

*** Bank face and in channel vegetation should be carried out no more than once per year, and only 1/3 of the vegetation cut in any year.

**** Silt may be removed where it is causing an impediment to flow, but again no more than 1/3 of an area in any year.

4.2.5 Marl Brook; Footpath behind Marlbrook Gardens, Catshill



Length of watercourse: 0.15 km

Special Features: n/a

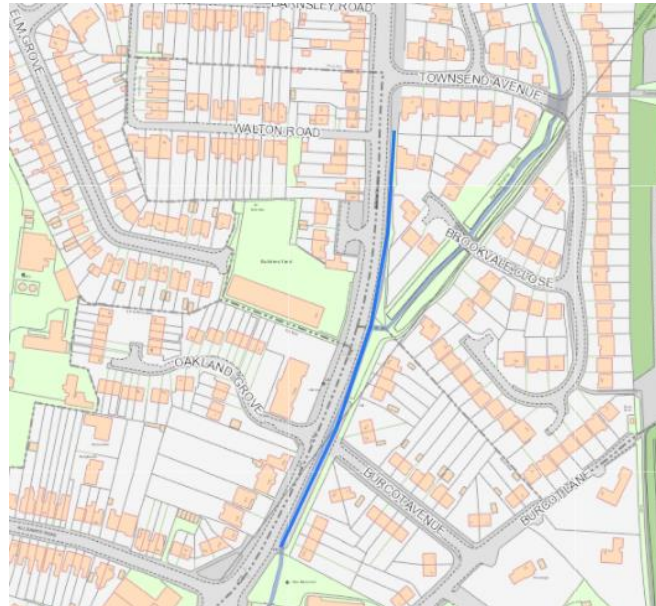
Activity	Frequency	Timing	Responsibility
Litter picking	6 monthly	Jan-Dec	Framework Contractor
Bank face vegetation strimming ***	Annually – no more than 1/3 per year	Sep-Oct	Framework Contractor
In-channel vegetation removal ***	If required – no more than 1/3 per year	Sep-Oct	Framework Contractor
Silt removal (Watercourse) ****	If required – no more than 1/3 per year	Sep-Oct	Framework Contractor

** Bank top vegetation (within 2m of the top of bank) should be cut once per year to a height of no less than 20cm.

*** Bank face and in channel vegetation should be carried out no more than once per year, and only 1/3 of the vegetation cut in any year.

**** Silt may be removed where it is causing an impediment to flow, but again no more than 1/3 of an area in any year.

4.2.6 Spadesbourne Brook; Burcot Avenue, Bromsgrove



Length of watercourse: 0.26 km

Special Features: n/a

Activity	Frequency	Timing	Responsibility
Litter picking	Monthly	Jan-Dec	Framework Contractor
Himalayan Balsam pulling where present *	Monthly in growing season	Mar-Jun	Framework Contractor
Bank face vegetation strimming ***	Annually – no more than 1/3 per year	Sep-Oct	Framework Contractor
In-channel vegetation removal ***	If required – no more than 1/3 per year	Sep-Oct	Framework Contractor
Silt removal (Watercourse) ****	If required – no more than 1/3 per year	Sep-Oct	Framework Contractor

* Himalayan Balsam should be pulled before the plant flowers and seed pods develop; the times above are a general indication.

** Bank top vegetation (within 2m of the top of bank) should be cut once per year to a height of no less than 20cm.

*** Bank face and in channel vegetation should be carried out no more than once per year, and only 1/3 of the vegetation cut in any year.

**** Silt may be removed where it is causing an impediment to flow, but again no more than 1/3 of an area in any year.

4.2.7 Upper Arrow Tributary; Blackwell Lane, Barnt Green



Length of watercourse: 0.11 km

Special Features: n/a

Activity	Frequency	Timing	Responsibility
Litter picking	6 monthly	Jan-Dec	Framework Contractor
Bank face vegetation strimming ***	Annually – no more than 1/3 per year	Sep-Oct	Framework Contractor
In-channel vegetation removal ***	If required – no more than 1/3 per year	Sep-Oct	Framework Contractor
Silt removal (Watercourse) ****	If required – no more than 1/3 per year	Sep-Oct	Framework Contractor

* Himalayan Balsam should be pulled before the plant flowers and seed pods develop; the times above are a general indication.

** Bank top vegetation (within 2m of the top of bank) should be cut once per year to a height of no less than 20cm.

*** Bank face and in channel vegetation should be carried out no more than once per year, and only 1/3 of the vegetation cut in any year.

**** Silt may be removed where it is causing an impediment to flow, but again no more than 1/3 of an area in any year.

5.0 Maintenance Responsibilities

The table below indicates which team(s) are responsible for each activities.

It is assumed that a framework contractor would be employed on a 1-2 day per week basis to focus upon proactively inspecting and clearing grids and hotspots, with the possibility of undertaking removal of excess silt and vegetation where required to assist with the place / parks teams during late Autumn and into Winter, and specific focus upon removing Himalayan Balsam plants from Council owned watercourses on a 5 day per week basis during Spring (typically March – June).

Specialist works such as pond / SuDS de-silting and culvert inspections are to be carried out by a specialist contractor, as part of Capital works.

Some sites may require the occasional addition of native wetland plants to ensure there is sufficient habitat and food for species such as water vole; in these instances NWWM will undertake the planning.

Prior to any in-channel works at Sanders Park or Lickey End Park, a water vole survey must be carried out by a competent and qualified surveyor.

Activity / Month	Place	Parks	Framework Contractor	NWWM	Specialist Contractor
Litter picking	✓	✓			
Trash Screen clearance [#]	✓	✓	✓		
Himalayan Balsam pulling *			✓		
Japanese Knotweed Treatment	✓	✓			
Planting wetland species (if required)				✓	
Mowing / flailing more than 2m from bank top	✓	✓			
Bank top vegetation strimming **	✓	✓			
Bank face vegetation strimming ***	✓	✓	✓		
In-channel vegetation removal ****			✓		
Silt removal (Watercourse) *****			✓		
Silt removal (Ponds) *****					✓
Culvert Inspection (CCTV)					✓
Culvert Repair / Maintenance					✓

* Himalayan Balsam should be pulled before the plant flowers and seed pods develop; the times above are a general indication.

** Bank top vegetation (within 2m of the top of bank) should be cut once per year to a height of no less than 20cm.

*** Bank face and in channel vegetation should be carried out no more than once per year, and only 1/3 of the vegetation cut in any year.

**** Silt may be removed where it is causing an impediment to flow, but again no more than 1/3 of an area in any year.

Where trash screens protect a Highways culvert, WCC will generally be responsible for maintenance, with checks also carried out by BDC operatives.

6.0 Maintenance Timings

The table below indicates the typical maintenance requirements of a watercourse, and the periods during which each activity can / should be undertaken. Shaded cells indicate work may take place. Note that this is a general rule, and some sites will have specific requirements due to the presence of protected species / invasive species. Some activities, such as litter picking and trash screen clearance will need to be undertaken far more frequently than in-channel vegetation management, for instance.

Activity / Month	Jan	Feb	Mar	Apr	May	Jun	Jul	Aug	Sep	Oct	Nov	Dec
Litter picking	✓	✓	✓	✓	✓	✓	✓	✓	✓	✓	✓	✓
Trash Screen clearance	✓	✓	✓	✓	✓	✓	✓	✓	✓	✓	✓	✓
Himalayan Balsam pulling *			✓	✓	✓	✓						
Japanese Knotweed Treatment								✓	✓	✓	✓	
Planting wetland species (if required)	✓	✓								✓	✓	✓
Mowing / flailing more than 2m from bank top	✓	✓	✓	✓	✓	✓	✓	✓	✓	✓	✓	✓
Bank top vegetation strimming **								✓	✓	✓		
Bank face vegetation strimming ***									✓	✓		
In-channel vegetation removal ***									✓	✓		
Silt removal (Watercourse) ****	✓	✓							✓	✓	✓	✓
Silt removal (Ponds) ****	✓	✓									✓	✓
Culvert Inspection (CCTV)	✓	✓	✓	✓	✓	✓	✓	✓	✓	✓	✓	✓
Culvert Repair / Maintenance	✓	✓	✓	✓	✓	✓	✓	✓	✓	✓	✓	✓

* Himalayan Balsam should be pulled before the plant flowers and seed pods develop; the times above are a general indication.

** Bank top vegetation (within 2m of the top of bank) should be cut once per year to a height of no less than 20cm.

*** Bank face and in channel vegetation should be carried out no more than once per year, and only 1/3 of the vegetation cut in any year.

**** Silt may be removed where it is causing an impediment to flow, but again no more than 1/3 of an area in any year.

6.0 Maintenance Frequency At A Glance

Typical maintenance requirements are listed below, and are colour coded according to how frequently each action is required at each location. For instance, sites near schools / transport links (such as bus stations) are more likely to require frequent litter picks than more isolated locations. Similarly, locations with a higher flood risk will require more frequent trash-screen inspections and are more likely to require vegetation management than watercourses in isolated areas where flooding will not impact properties. Some tasks such as vegetation management and silt-management cannot be programmed far in advance, however based on the suggested maintenance frequency for each location, there should be no more than 5 sites to visit per day for the majority of the year, therefore freeing up capacity for more intensive maintenance should not be too difficult. Intensive Himalayan Balsam removal is proposed during the growing months; this plant is mainly prevalent along the Spadesbourne Brook and Battlefield Brook.

Red	1	Weekly
Orange	2	Fortnightly
Brown	3	Monthly
Green	5	3 Monthly
Cyan	6	6 Monthly
Blue	7	Annually If Required
Purple	9	5-15 yearly
Grey	9	As & when required
		n/a

LOCATION		Litter Picking	Balsam Pulling	Knotweed Treatment	Trash / security Screen / outlet	Wetland Planting	Mowing (>2m)	Bank top strimming	Bank Face Strimming	In Channel veg management	Silt removal (w/c)	Silt removal (pond)	Culvert inspection
Barley Brook	Land at Shelley Close	Green	Brown					Blue	Blue	Blue			
Battlefield Brook	Sanders Park	Brown	Brown		Green			Blue	Blue	Blue		Purple	Purple
Callow Brook	Callowbrook Park	Red			Brown			Blue	Blue	Blue		Purple	Purple
Callow Brook	St Chads Park	Brown			Brown			Blue	Blue	Blue			
Gallows Brook	Sweetpool Nature Reserve	Brown	Brown		Brown			Blue	Blue	Blue			
Hollywood Brook	Beauesert Park	Orange			Brown			Blue	Blue	Blue		Purple	
Marl Brook	Braces Lane	Brown						Blue	Blue	Blue			
Marl Brook	Golden Cross Lane car park	Orange			Brown			Blue	Blue	Blue			

Marl Brook	Lingfield Walk												
River Rea tributary	Boleyn Road												
Spadesbourne Brook	Brookvale Close												
Spadesbourne Brook	Charford Recreation Ground												
Spadesbourne Brook	Crown Close												
Spadesbourne Brook	Lickey End Recreation Ground												
Spadesbourne Brook	Little Heath Lane culvert												
Spadesbourne Brook	Meadowvale Road												
Spadesbourne Brook	Roman Way												
Spadesbourne Brook	Spadesbourne Walk												
Spadesbourne Brook	St John Street (Waitrose)												
Spadesbourne Brook	Watt Close												
Spadesbourne Brook	Yeomans Walk												
Sugar Brook	Buntsford Road												
Sugar Brook	Stoke Road												
Warwick Brook	The Oakhalls												
Willow Brook	Grayshott Close												

Callow Brook	Land off New Road												
Churchill Brook	Beoley Lane												
Gallows Brook	Market Way												
Hollywood Brook	Various unregistered land												
Marl Brook	Footpath behind Marlbrook Gardens												
Spadesbourne Brook	Burcot Avenue												
Upper Arrow tributary	Blackwell Road												

7.0 Programme of Major Maintenance Activities For Next 10 Years

The following work is anticipated which will need to be carried out by specialist contractors, with de-silting work carried out as Capital works. CCTV inspections typically cost in the region of £500(inc VAT) per half-day.

2022

Little Heath Lane Culvert Inspection (booked)
Lingfield Walk FAS Pond De-Silting

2023

2024

Oakalls Culverts CCTV Inspection

2025

Callow Brook FAS Pond De-Silting (if required)
St John St Culvert Inspection (only if site is developed) ▲
Oakalls SuDS Pond De-Silting (if required)

2026

Lickey End Recreation Ground Pond De-Silting (if required)
Beaudesert Park FAS Pond De-Silting

2027

2028

Sanders Park SuDS Pond De-Silting
Sanders Park Culvert CCTV Inspection

2029

2030

Linfield Walk FAS Culvert CCTV Inspection
Callow Brook FAS Culvert CCTV Inspection

2031

Railway Walk Culvert Inspection ▲
Beaudesert Park FAS Pond De-Silting

NOTE: Sites outside of BDC's ownership are marked with an ▲.

8.0 2021-2025 Programme of Maintenance

See excel spreadsheet. Note: Week one refers to the first full week in January, however the plan may commence at any given time.